

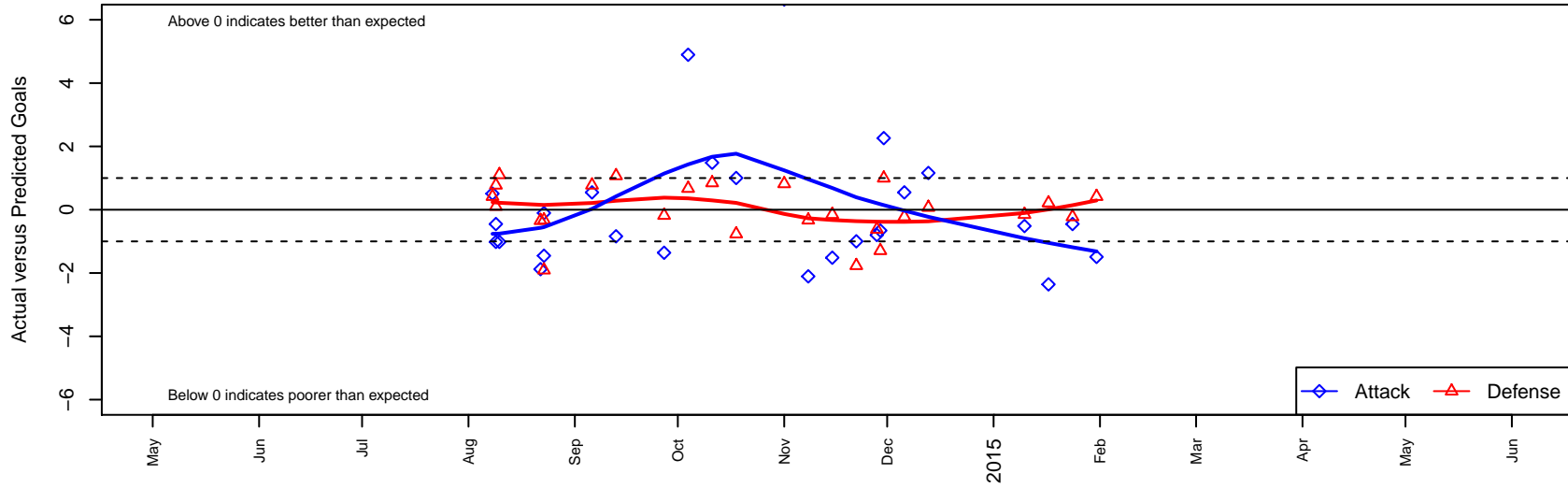
NSC Vipers G02

North Shore SC
 Woodinville, WA
 G02 total strength=616
 attack=0.71 defense=0.39
 fall league = NPSL G12D2

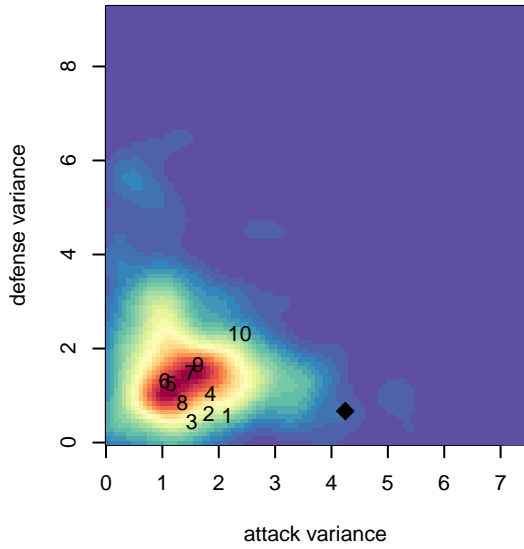
alt names used:
 NSC GU12 Vipers
 NSC Vipers G02
 NORTSHORE SELECT VIPERS (WA)
 Vipers

Venues played:
 2014 Shoreline Classic GU12
 2014 REDAPT Cup Silver U12
 2014 NPSL G12D2
 2014 Cranberry Cup U12
 2014 Founders Cup G02

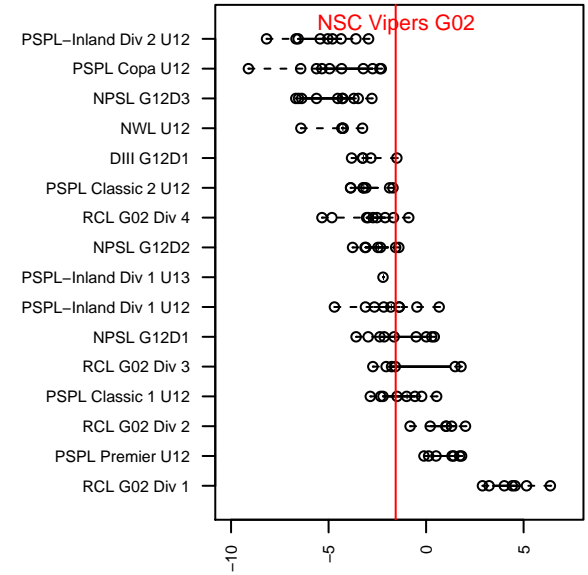
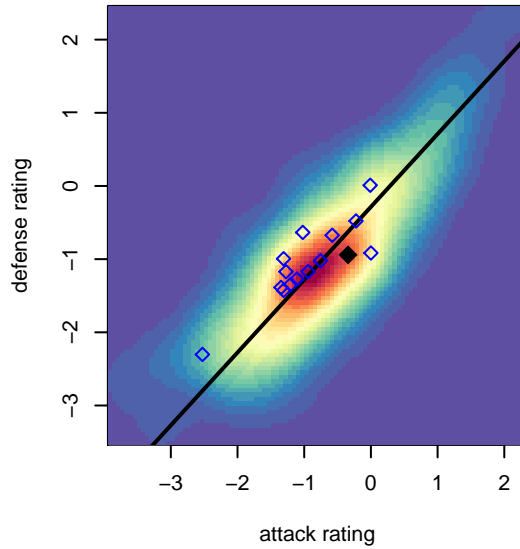
NSC Vipers G02
 Dots are actual minus expected GF (blue circles) and GA (red triangles).
 Blue line is smoothed change in attack strength. Red is smoothed change in defense strength.



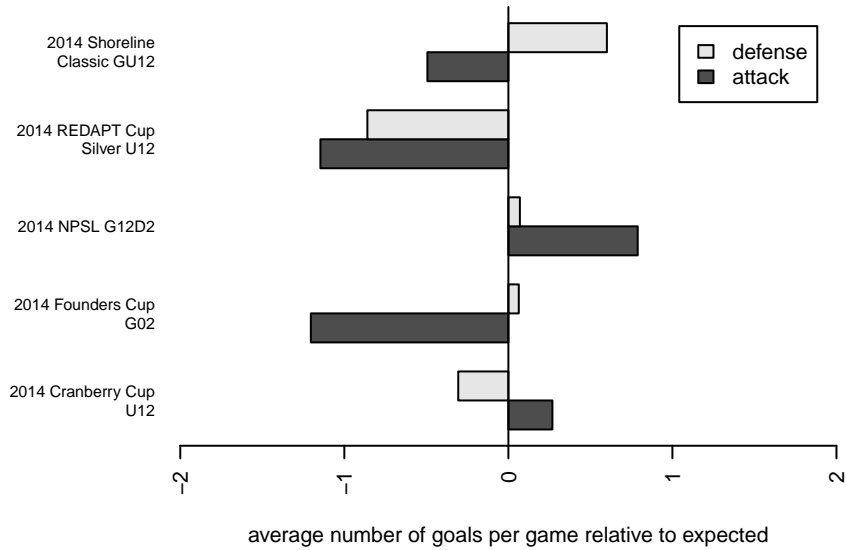
**attack and defense variance (black dot)
relative to other teams
and top 10 in region**



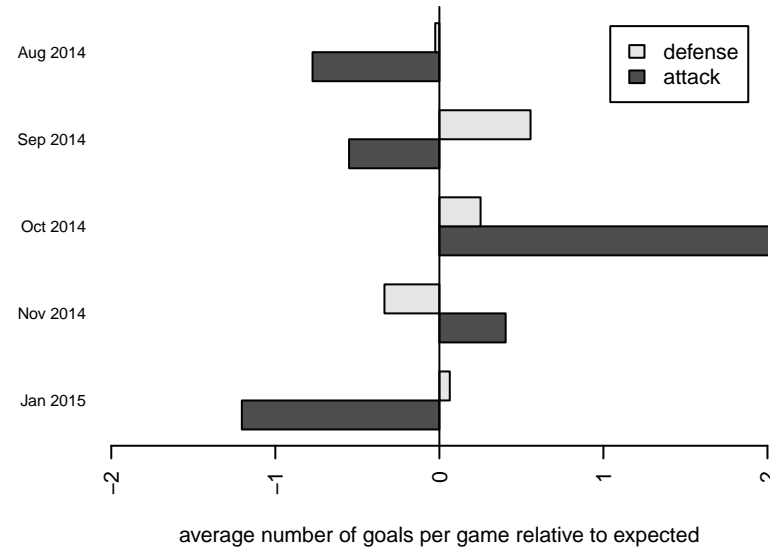
**attack and defense rating
relative to others at age
and all opponents in last 13 months**



Performance relative to 13 month average



Performance relative to 13 month average



| date | home | | away | | venue | pred.home | pred.away |
|------------|-----------------------------------|---|-----------------------------------|---|-----------------------------|-----------|-----------|
| 2015-01-31 | NSC Vipers G02 | 0 | Seattle United Shoreline Blue G02 | 1 | 2014 Founders Cup G02 | 1.49 | 1.42 |
| 2015-01-24 | NSC Vipers G02 | 1 | Lake Hills Supreme G02 | 1 | 2014 Founders Cup G02 | 1.45 | 0.78 |
| 2015-01-17 | Mukilteo Rush Nero G02 | 0 | NSC Vipers G02 | 5 | 2014 Founders Cup G02 | 0.21 | 7.36 |
| 2015-01-10 | NSC Vipers G02 | 2 | Seattle United W Blue G02 | 1 | 2014 Founders Cup G02 | 2.52 | 0.85 |
| 2014-12-13 | NSC Vipers G02 | 3 | NSC Thunder G02 | 1 | 2014 NPSL G12D2 | 1.84 | 1.07 |
| 2014-12-06 | Lake Hills Supreme G02 | 1 | NSC Vipers G02 | 2 | 2014 NPSL G12D2 | 0.78 | 1.45 |
| 2014-11-30 | PSA Force G02 | 0 | NSC Vipers G02 | 4 | 2014 Cranberry Cup U12 | 1.00 | 1.74 |
| 2014-11-29 | NSC Vipers G02 | 2 | Seattle United S White G02 | 2 | 2014 Cranberry Cup U12 | 2.66 | 0.71 |
| 2014-11-28 | Crossfire Select Reimbold G02 | 3 | NSC Vipers G02 | 0 | 2014 Cranberry Cup U12 | 2.38 | 0.80 |
| 2014-11-22 | Storm King G02 | 4 | NSC Vipers G02 | 1 | 2014 NPSL G12D2 | 2.23 | 2.00 |
| 2014-11-15 | NSC Vipers G02 | 1 | Seattle United W Blue G02 | 1 | 2014 NPSL G12D2 | 2.52 | 0.85 |
| 2014-11-08 | Seattle United S Black G02 | 1 | NSC Vipers G02 | 1 | 2014 NPSL G12D2 | 0.67 | 3.10 |
| 2014-11-01 | MIFC Fusion G02 | 0 | NSC Vipers G02 | 9 | 2014 NPSL G12D2 | 0.82 | 2.36 |
| 2014-10-18 | NSC Vipers G02 | 3 | Storm King G02 | 3 | 2014 NPSL G12D2 | 2.00 | 2.23 |
| 2014-10-11 | Seattle United W Blue G02 | 0 | NSC Vipers G02 | 4 | 2014 NPSL G12D2 | 0.85 | 2.52 |
| 2014-10-04 | NSC Vipers G02 | 8 | Seattle United S Black G02 | 0 | 2014 NPSL G12D2 | 3.10 | 0.67 |
| 2014-09-27 | NSC Vipers G02 | 1 | MIFC Fusion G02 | 1 | 2014 NPSL G12D2 | 2.36 | 0.82 |
| 2014-09-13 | NSC Thunder G02 | 0 | NSC Vipers G02 | 1 | 2014 NPSL G12D2 | 1.07 | 1.84 |
| 2014-09-06 | NSC Vipers G02 | 2 | Lake Hills Supreme G02 | 0 | 2014 NPSL G12D2 | 1.45 | 0.78 |
| 2014-08-23 | NSC Vipers G02 | 3 | Seattle United S Black G02 | 1 | 2014 REDAPT Cup Silver U12 | 3.10 | 0.67 |
| 2014-08-23 | NSC Vipers G02 | 1 | Crossfire Premier Towns G02 | 3 | 2014 REDAPT Cup Silver U12 | 2.45 | 1.09 |
| 2014-08-22 | NSC Vipers G02 | 1 | Snohomish United Red G02 | 1 | 2014 REDAPT Cup Silver U12 | 2.88 | 0.66 |
| 2014-08-10 | Crossfire Select Miller G02 | 1 | NSC Vipers G02 | 0 | 2014 Shoreline Classic GU12 | 2.10 | 1.02 |
| 2014-08-09 | NSC Vipers G02 | 1 | Lake Hills Supreme G02 | 0 | 2014 Shoreline Classic GU12 | 1.45 | 0.78 |
| 2014-08-09 | Crossfire Select Miller G02 | 2 | NSC Vipers G02 | 0 | 2014 Shoreline Classic GU12 | 2.10 | 1.02 |
| 2014-08-08 | Seattle United Shoreline Blue G02 | 1 | NSC Vipers G02 | 2 | 2014 Shoreline Classic GU12 | 1.42 | 1.49 |